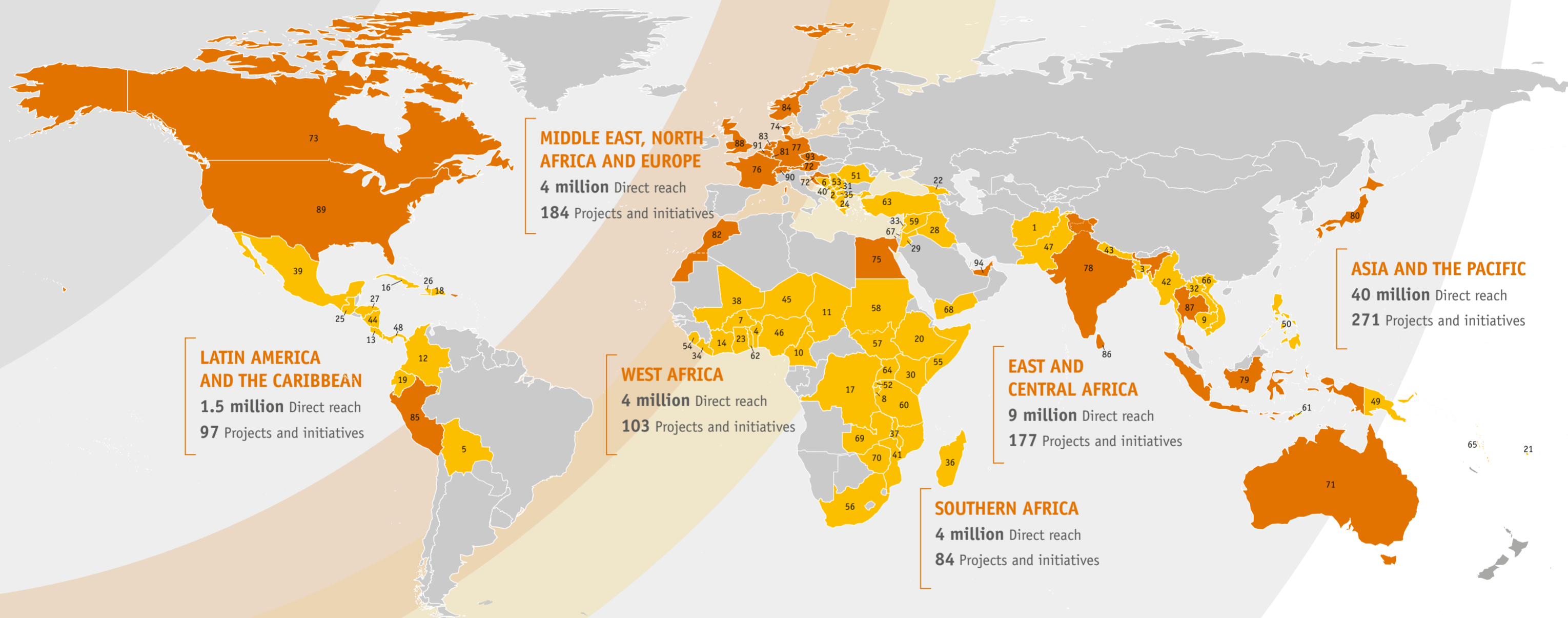


A WORLD OF CARE



IN FY 2017, CARE WORKED IN **93 COUNTRIES**, SUPPORTING **950 POVERTY-FIGHTING DEVELOPMENT AND HUMANITARIAN AID PROJECTS**, REACHING MORE THAN **63 MILLION PEOPLE DIRECTLY**.



COUNTRIES WITH CARE PROGRAMMING IN FY17:

- | | | | | | | |
|------------------------------|--------------------------------------|-------------------------|-----------------------------|--------------------------|-----------------------|----------------------|
| 1. Afghanistan | 11. Chad | 20. Ethiopia | 31. Kosovo | 42. Myanmar | 53. Serbia | 64. Uganda |
| 2. Albania [¶] | 12. Colombia [¶] | 21. Fiji [¶] | 32. Laos | 43. Nepal | 54. Sierra Leone | 65. Vanuatu |
| 3. Bangladesh | 13. Costa Rica [¶] | 22. Georgia | 33. Lebanon | 44. Nicaragua | 55. Somalia | 66. Vietnam |
| 4. Benin | 14. Côte d'Ivoire | 23. Ghana | 34. Liberia [¶] | 45. Niger | 56. South Africa | 67. West Bank & Gaza |
| 5. Bolivia | 15. Croatia [¶] | 24. Greece [¶] | 35. Macedonia [¶] | 46. Nigeria [¶] | 57. South Sudan | 68. Yemen |
| 6. Bosnia and Herzegovina | 16. Cuba | 25. Guatemala | 36. Madagascar | 47. Pakistan | 58. Sudan | 69. Zambia |
| 7. Burkina Faso [¶] | 17. Democratic Republic of the Congo | 26. Haiti | 37. Malawi | 48. Panama [¶] | 59. Syria | 70. Zimbabwe |
| 8. Burundi | 18. Dominican Republic [¶] | 27. Honduras | 38. Mali | 49. Papua New Guinea | 60. Tanzania | |
| 9. Cambodia | 19. Ecuador | 28. Iraq | 39. Mexico [¶] | 50. Philippines | 61. Timor-Leste | |
| 10. Cameroon | | 29. Jordan | 40. Montenegro [¶] | 51. Romania [¶] | 62. Togo [¶] | |
| | | 30. Kenya | 41. Mozambique | 52. Rwanda | 63. Turkey | |

CARE INTERNATIONAL MEMBERS^{**}:

71. Australia
72. Austria
73. Canada
74. Denmark
75. Egypt
76. France
77. Germany[◇]
78. India
79. Indonesia
80. Japan
81. Luxembourg[◇]
82. Morocco
83. Netherlands
84. Norway
85. Peru
86. Sri Lanka
87. Thailand
88. United Kingdom
89. United States

CARE INTERNATIONAL SECRETARIAT:

90. Geneva, Switzerland[^]
91. Brussels, Belgium[^]
- New York, United States[^]

SUB-OFFICES:

- Belgium[∅] (of CARE France)
92. Czech Republic[∅] (of CARE Austria)
93. United Arab Emirates[∅] (of CARE USA)

^{**} CARE International Members, Candidates and Affiliates¹.

[¶] Limited CARE presence, temporary CARE presence or working through strategic partnerships.

[◇] CARE Germany-Luxemburg has offices in both Germany and Luxembourg.

[^] CI Secretariat offices in Switzerland, Belgium and the United States are part of CARE's international advocacy and humanitarian work.

[∅] Sub-offices have a strong focus on fundraising.

¹ CARE International Members, Candidates and Affiliates may implement projects and initiatives in their own countries.